

APPENDIX 02 – STREAM NETWORKS

Table App.-02.1: Listing of Sub-watersheds of the Lower Rio Embudo watershed (WBP study area) in descending order by size (in km²).

ORDER by Area (km ²)	KEY (Hydro_ID)	NAME: Subwatershed / Arroyo	AREA: Subwatershed (km ²)
1	119	Rio de las Trampas	104.533
2	118	Canada del Oso	55.854
3	33	Arroyo del Plomo	29.405
4	113	Arroyo la Mina	7.049
5	75	Arroyo 75	5.649
6	116	Canada de Lorenzo	4.983
7	112	Arroyo Pino	4.238
8	111	Arroyo 111	3.191
9	117	Canada del Montecito	2.950
10	115	Arroyo 115	2.710
11	114	Canada de los Pino Reales	2.235
12	70	Arroyo 70	1.221
13	102	Arroyo 102	1.163
14	58	Arroyo 58	0.981
15	106	Arroyo 106	0.823
16	83	Arroyo 83	0.809
17	24	Arroyo 24	0.741
18	61	Arroyo 61	0.661
19	30	Arroyo 30	0.659
20	104	Arroyo 104	0.643
21	50	Arroyo 50	0.642
22	28	Arroyo 28	0.637
23	100	Arroyo 100	0.587
24	63	Arroyo 63	0.562
25	77	Arroyo 77	0.509
26	110	Arroyo 110	0.506
27	19	Arroyo 19	0.501
28	45	Arroyo 45	0.475
29	84	Arroyo 84	0.474
30	53	Arroyo 53	0.469
31	97	Arroyo 97	0.406
32	31	Arroyo 31	0.352
33	105	Arroyo 105	0.309
34	99	Arroyo 99	0.288
35	16	Arroyo 16	0.268
36	80	Arroyo 80	0.263
37	108	Arroyo 108	0.263
38	49	Arroyo 49	0.258
39	109	Arroyo 109	0.245
40	94	Arroyo 94	0.244
41	56	Arroyo 56	0.239
42	66	Arroyo 66	0.215
43	41	Arroyo 41	0.203
44	43	Arroyo 43	0.191
45	34	Arroyo 34	0.177
46	26	Arroyo 26	0.162
47	57	Arroyo 57	0.161

ORDER by Area (km2)	KEY (Hydro_ID)	NAME: Subwatershed / Arroyo	AREA: Subwatershed (km2)
48	42	Arroyo 42	0.151
49	3	Arroyo 3	0.149
50	71	Arroyo 71	0.146
51	25	Arroyo 25	0.137
52	44	Arroyo 44	0.131
53	65	Arroyo 65	0.131
54	7	Arroyo 7	0.123
55	14	Arroyo 14	0.122
56	23	Arroyo 23	0.104
57	29	Arroyo 29	0.095
58	2	Arroyo 2	0.093
59	17	Arroyo 17	0.091
60	12	Arroyo 12	0.091
61	1	Arroyo 1	0.089
62	21	Arroyo 21	0.080
63	22	Arroyo 22	0.074
64	27	Arroyo 27	0.074
65	54	Arroyo 54	0.074
66	4	Arroyo 4	0.073
67	103	Arroyo 103	0.071
68	6	Arroyo 6	0.070
69	67	Arroyo 67	0.069
70	79	Arroyo 79	0.068
71	98	Arroyo 98	0.067
72	47	Arroyo 47	0.067
73	35	Arroyo 35	0.066
74	40	Arroyo 40	0.066
75	13	Arroyo 13	0.066
76	74	Arroyo 74	0.065
77	69	Arroyo 69	0.063
78	68	Arroyo 68	0.063
79	73	Arroyo 73	0.063
80	82	Arroyo 82	0.063
81	10	Arroyo 10	0.062
82	37	Arroyo 37	0.062
83	32	Arroyo 32	0.061
84	78	Arroyo 78	0.059
85	38	Arroyo 38	0.058
86	88	Arroyo 88	0.056
87	92	Arroyo 92	0.055
88	11	Arroyo 11	0.054
89	51	Arroyo 51	0.050
90	15	Arroyo 15	0.050
91	48	Arroyo 48	0.046
92	91	Arroyo 91	0.046
93	52	Arroyo 52	0.045
94	55	Arroyo 55	0.044
95	86	Arroyo 86	0.043
96	8	Arroyo 8	0.042
97	87	Arroyo 87	0.042
98	62	Arroyo 62	0.040
99	89	Arroyo 89	0.040
100	85	Arroyo 85	0.038

ORDER by Area (km2)	KEY (Hydro_ID)	NAME: Subwatershed / Arroyo	AREA: Subwatershed (km2)
101	64	Arroyo 64	0.037
102	59	Arroyo 59	0.037
103	93	Arroyo 93	0.036
104	20	Arroyo 20	0.036
105	18	Arroyo 18	0.035
106	95	Arroyo 95	0.033
107	90	Arroyo 90	0.033
108	101	Arroyo 101	0.033
109	36	Arroyo 36	0.032
110	107	Arroyo 107	0.032
111	81	Arroyo 81	0.031
112	96	Arroyo 96	0.031
113	39	Arroyo 39	0.031
114	46	Arroyo 46	0.030
115	72	Arroyo 72	0.030
116	76	Arroyo 76	0.030
117	9	Arroyo 9	0.028
118	60	Arroyo 60	0.027

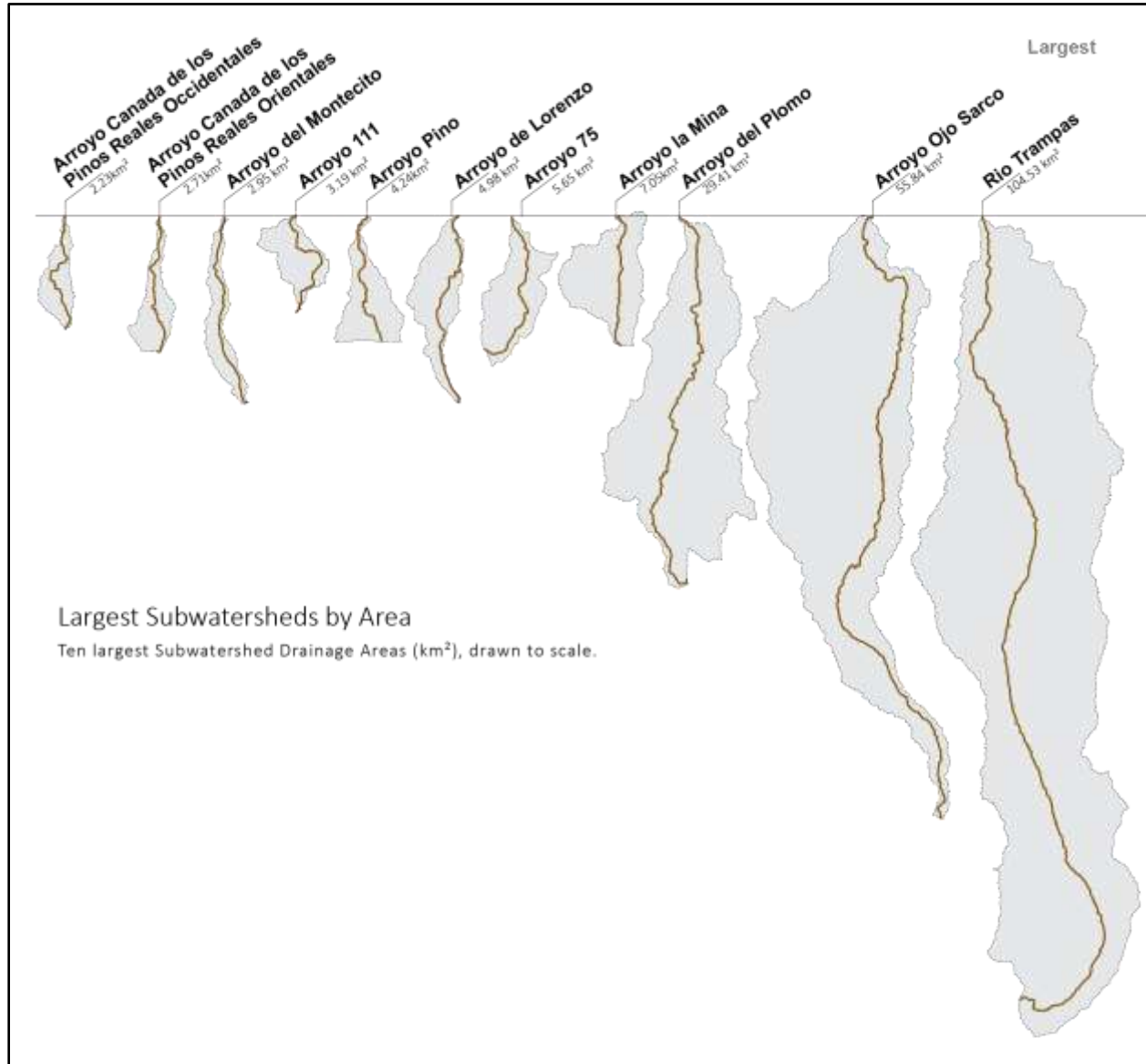


Figure App.-02.1. Graphic comparison of the eleven largest sub-watershed by area, drawn to scale. (Courtesy Arid Lands Institute and Ecotone Landscape Planning).

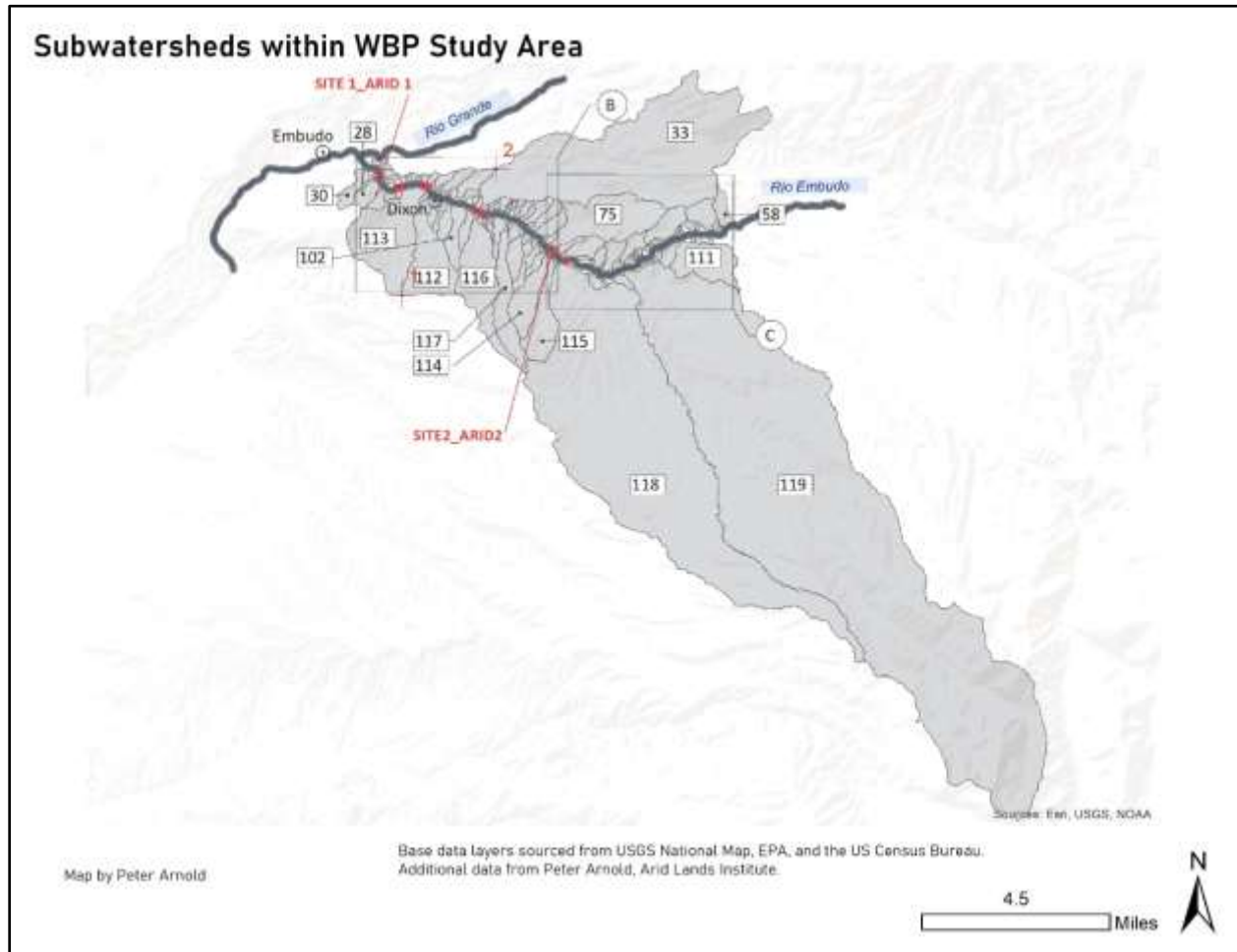


Figure App.02.2. Sub-watersheds within the WBP study area, overview. (Courtesy Arid Lands Institute and Ecotone Landscape Planning).

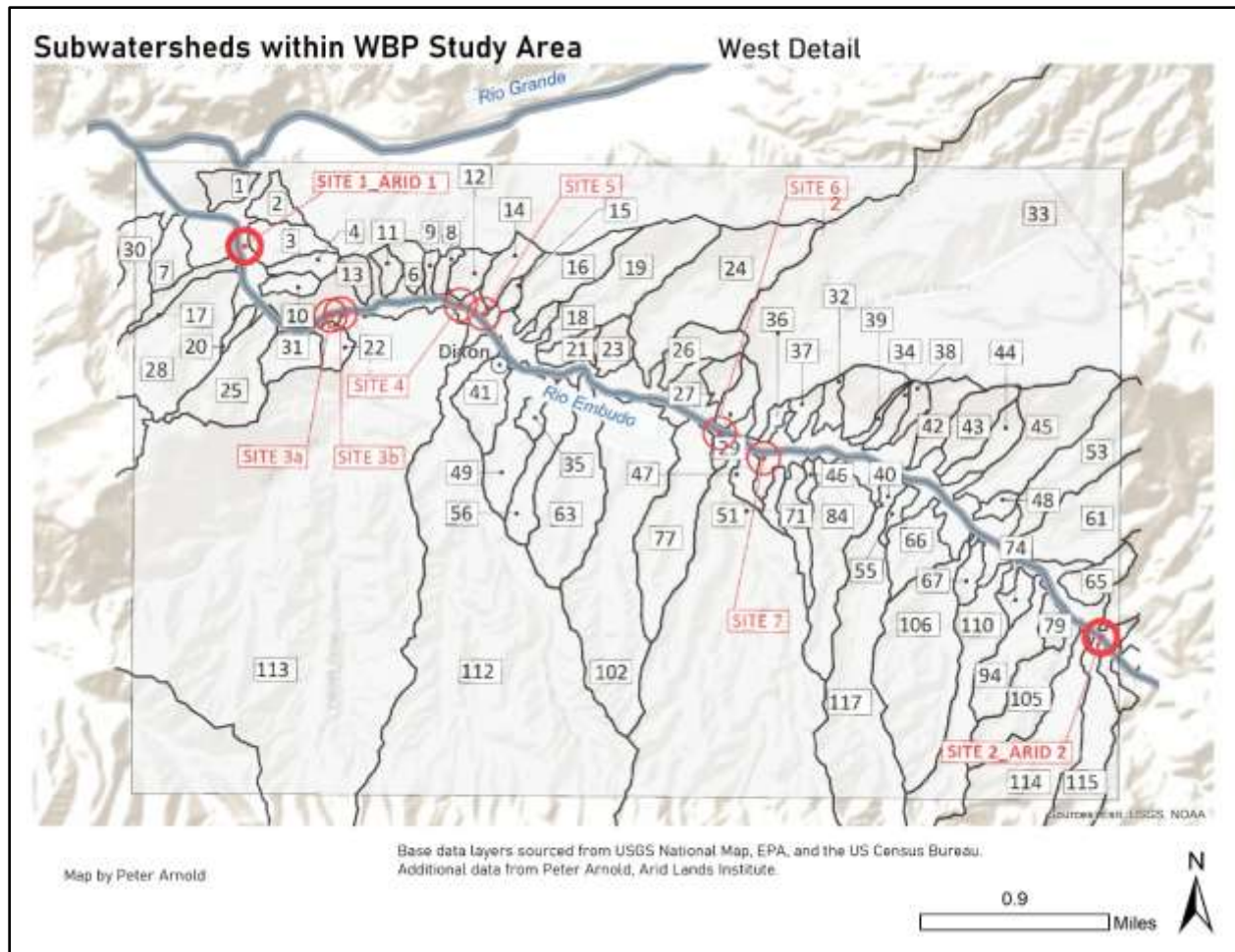


Figure App.02.3. Sub-watersheds within the WBP study area, west detail. (Courtesy Arid Lands Institute and Ecotone Landscape Planning).

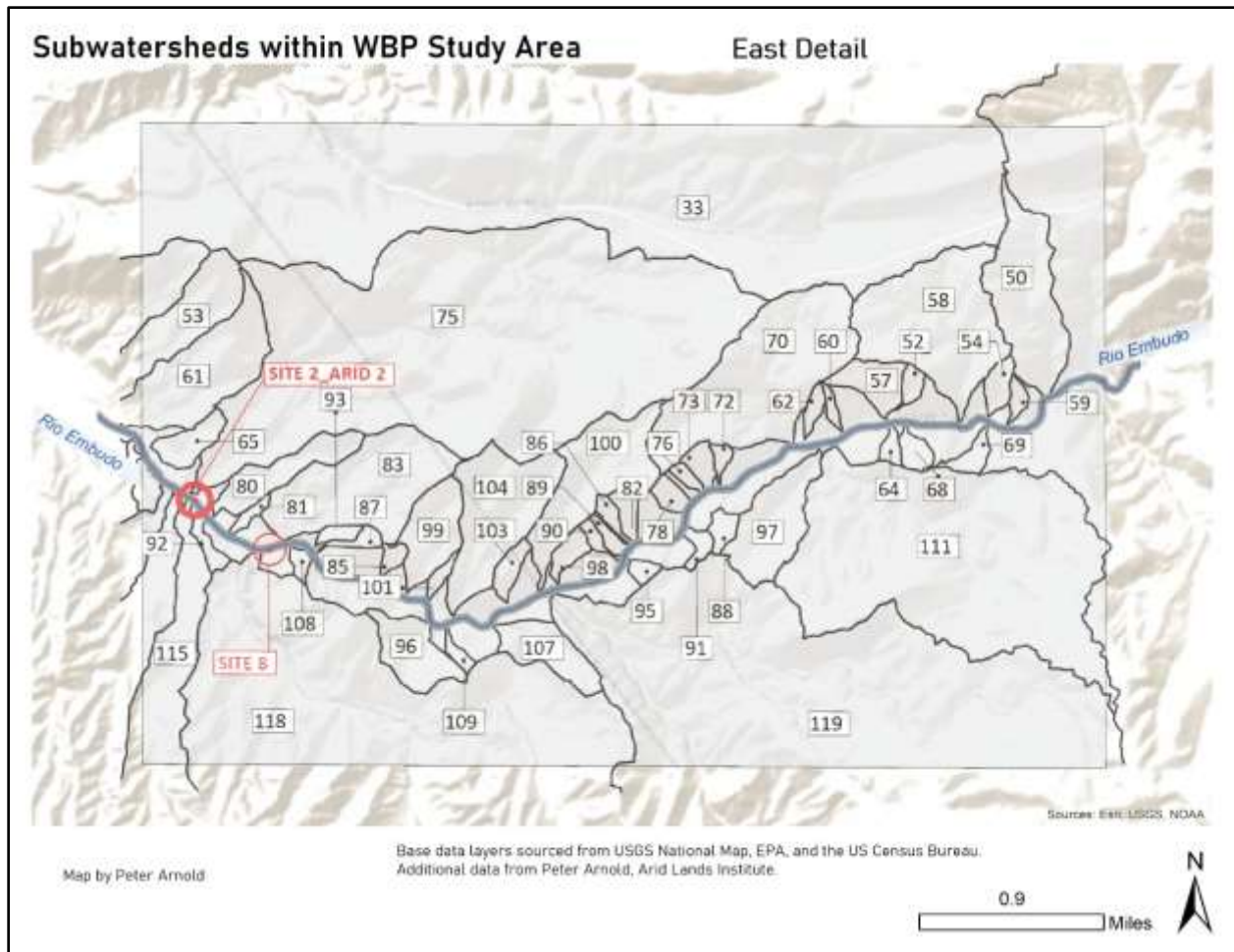


Figure App.02.4. Sub-watersheds within the WBP study area, east detail. (Courtesy Arid Lands Institute and Ecotone Landscape Planning).